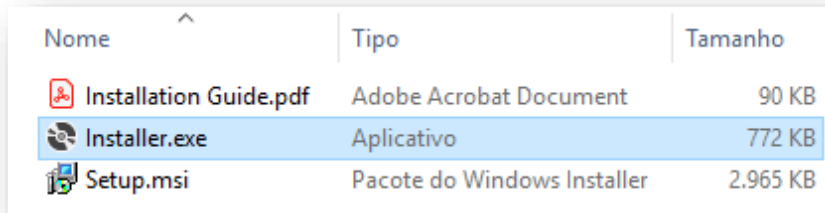

MopeTools Showcase




Installation Guide

MOPE – Modelo Operacional

For the installation of the MopeTools Showcase version in your computer, follow the steps below.

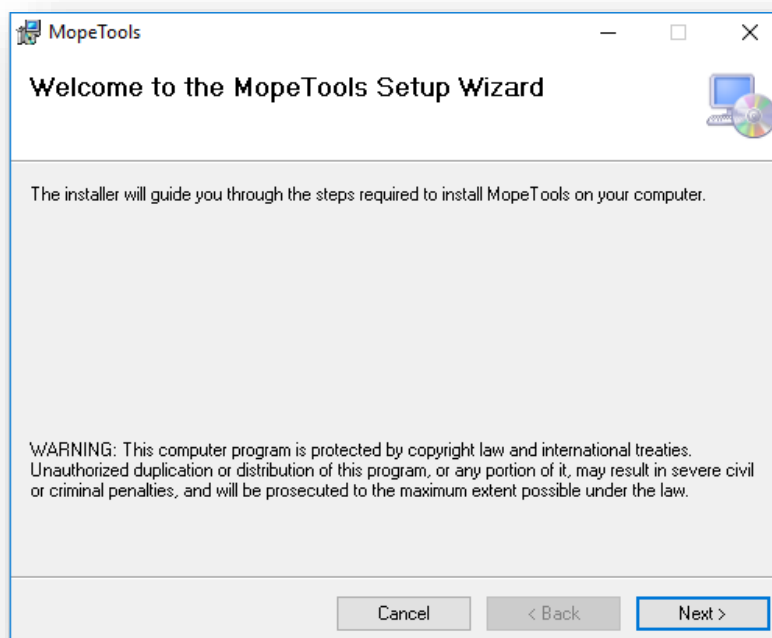
Step 1: Double click the file Installer.exe



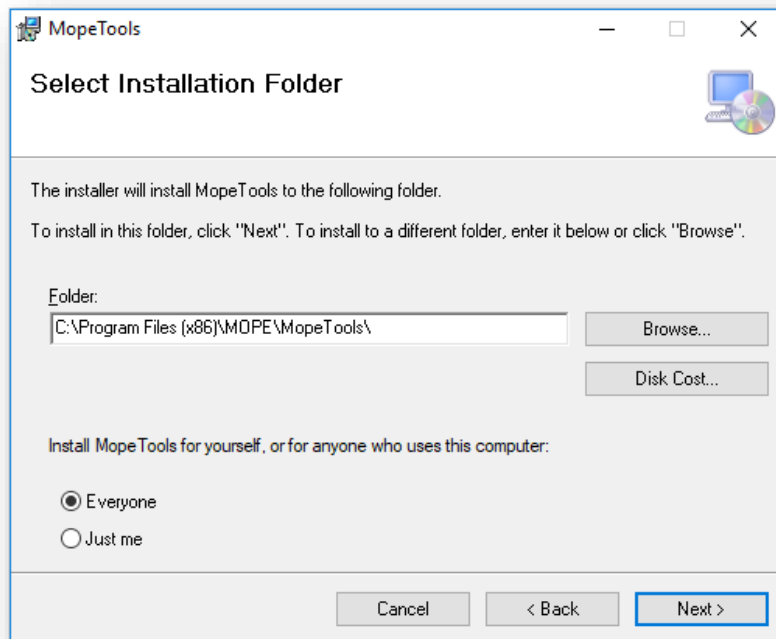
Nome	Tipo	Tamanho
 Installation Guide.pdf	Adobe Acrobat Document	90 KB
 Installer.exe	Aplicativo	772 KB
 Setup.msi	Pacote do Windows Installer	2.965 KB

Remark: Anti-virus and the Windows defender may indicate the installation file as false positive for viruses. If that happens, you can indicate the file as trusted when asked without problems. Now, if the problem remains, you can deactivate your Anti-virus for the installation and reactivate it after the procedure. In any case, let us know if that happens so we can request your Anti-virus to add our application to its whitelist.

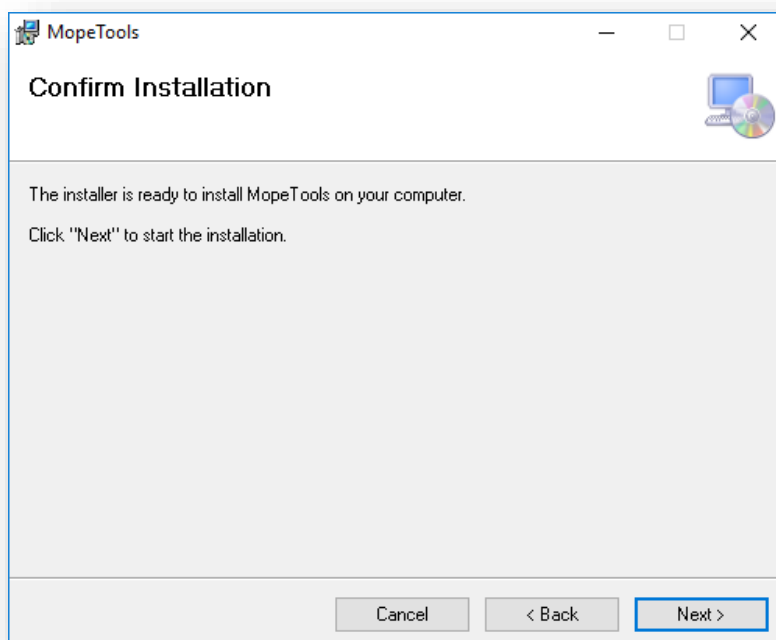
Step 2: After the Setup Wizard initialization, clique Next.



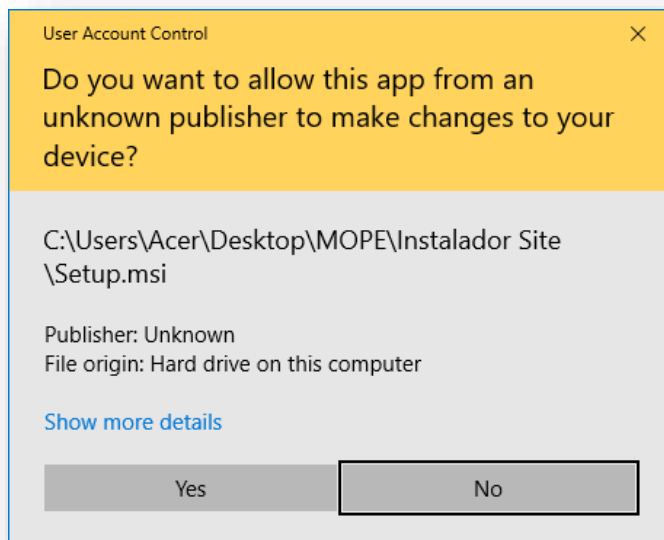
Step 3: It is recommended the use of the default configurations, hence, click Next.



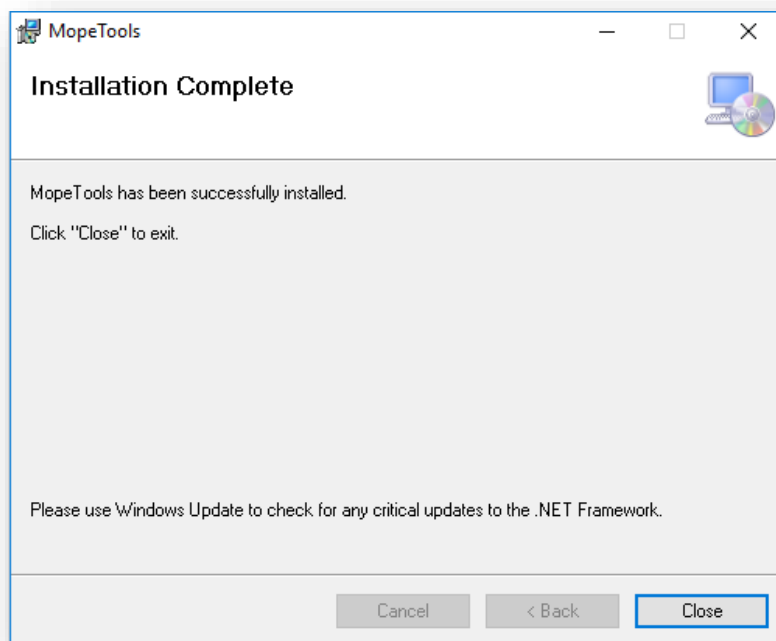
Step 4: The installation setup is finished, click Next to install.



Step 5: A Windows message requiring permission to install the new software will appear, click Yes to allow the modification. If your User does not have administrator permissions, contact IT support for help.



Step 6: The installation is now complete and an icon to access the application can be found at the Desktop and at the windows start menu. Click Close to finish the setup wizard.



Do you still need help? Contact us, we will be glad to assist.

Email: ti@modeloopercional.com.br